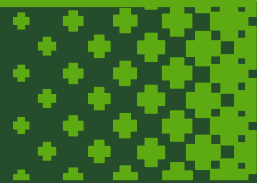


EDIFICI BLANC - ESCOLES

FUABformació

PLAN OF CONTINGENCY AND ORGANISATION (SARS-CoV-2)



INTRODUCTION.....	3
OBJECTIVES OF THE PLAN	4
PRINCIPLES OF ACTION	4
SCOPE	4
RESPONSIBILITIES	5
STRUCTURE OF THE PLAN	7
ORGANISATIONAL MEASURES	9
PROTECTIVE MEASURES	11
HYGIENE MEASURES	12
PREVENTIVE MEASURES	13
CLEANING AND DISINFECTION PROTOCOLS	14
CONTINGENCY PLAN	15

ANNEX I – Plans of the building

ANNEX II – Contingency procedure

ANNEX III – Signage

ANNEX IV - Dispensers

In accordance with the latest regulatory changes and given the health situation related to Covid - 19, it is no longer mandatory to wear a mask in classrooms or inside buildings. It is also not necessary to communicate the absence due to this illness to the School, nor should the School communicate the existence of positives in the classrooms to the students.

The rest of the protection measures, such as hand hygiene or classroom ventilation, are still in force.

INTRODUCTION

On March 11, 2020, the World Health Organisation declared an international pandemic caused by an epidemic of COVID-19. The end of the academic year 2019 – 2020 and the whole of 2020 – 2021 were affected by the Covid-19 outbreak.

As for the current academic year, 2021 – 2022; although things have improved, we are still embroiled in a health crisis and we have to continue to take measures to contain and combat the Covid-19 virus.

During this period of time, the activity of the Edifici Blanc - Escoles of the FUAB has been directly affected by this situation and its evolution. The Edifici Blanc - Escoles offers an important service to the community. It is for this reason that in order to reduce the risk of SARS-CoV-2 coronavirus transmission to the people it serves, to the people who work or collaborate, The Edifici Blanc - Escoles has chosen to implement a Plan of Contingency following the guidelines and recommendations of Resolution SLT / 1429/2020, of 18 June, which adopts basic protection and organisational measures to prevent the risk of transmission and promote the containment of infection SAR-CoV -2.

As we begin the academic year 2021 – 2022 we need to update this plan in accordance with regulations currently in place:

- Resolution SLT/2704/2021, issued on the 2nd of September, which extended and modified the measures in place throughout Catalonia as regards public health materials aimed at containing the outbreak of the Covid-19 pandemic.
- Universities sector plan (07/21/2021)
- Instructions for planning UAB teaching practices during 2021 – 2022.
- Action plan for 2021 – 2022 for education centres, within the framework of the pandemic

OBJECTIVES OF THE PLAN

The purpose of this document is to present the set of preventive and organisational measures that have been planned in the Edifici Blanc - Escoles from September 2020 until the PROCICAT Action Plan for Emergencies Associated with Emerging Communicable Diseases with High Risk Potential ceases to be active.

This set of measures is established with the intention of:

-
- **Guarantee the protection and safety of members of the university community who carry out their activity in the Edifici Blanc - Escoles.**
 - **Enable activity spaces in the best conditions.**
 - **Flexibility and remote development of some teaching and management activities.**
-

All activity in the Edifici Blanc - Escoles must respect the hygienic-sanitary and physical distance measures determined in this document, as well as comply with the organisational and legal measures in force.

PRINCIPLES OF ACTION

This Contingency Plan and Organisational Protocol ("PCPO") has been prepared in accordance with the guidelines and recommendations cited in the introduction to this document and applying the following principles of action at all times:

-
- **Preserve people's health.**
 - **Respect the provisions established by government authorities and the current regulatory framework.**
 - **The continuity of the provision of the service of renting spaces for teaching.**
 - **Compliance with the Occupational Risk Prevention Act and other applicable regulations within the framework of this document.**
-

SCOPE

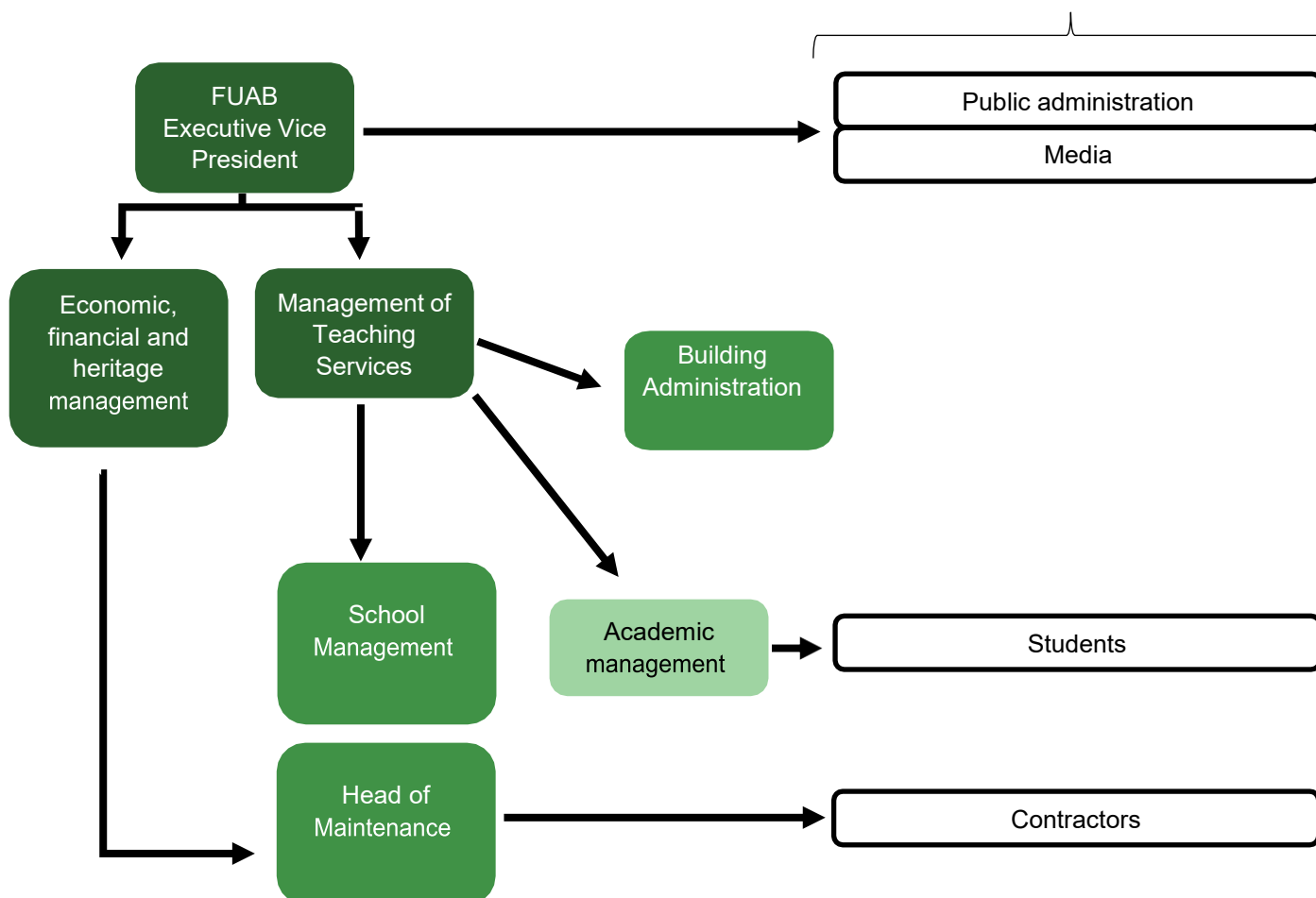
This Contingency and Organisation Plan is applicable to all people who carry out their activity in Edifici Blanc - Escoles.

RESPONSIBILITIES

- It is the responsibility of the executive vice-presidency of the FUAB to lead the implementation of the measures provided for in this plan.
- Designate to the administration of the Edifici Blanc as responsible for the application of the measures contained in this Contingency Plan and organisational protocol. This person is the interlocutor with the health authorities in case it is required in the framework of the control of a possible epidemiological outbreak that affected Edifici Blanc - Escoles.
- The Monitoring Committee of COVID-19 (C.S.) is made up of the executive vice-president of the UAB Foundation and the Building Administration. Its function is to evaluate the evolution of the incidence rate of the disease in the Edifici Blanc - Escoles and to determine which are the potential extraordinary measures necessary, but not foreseen in this containment plan.

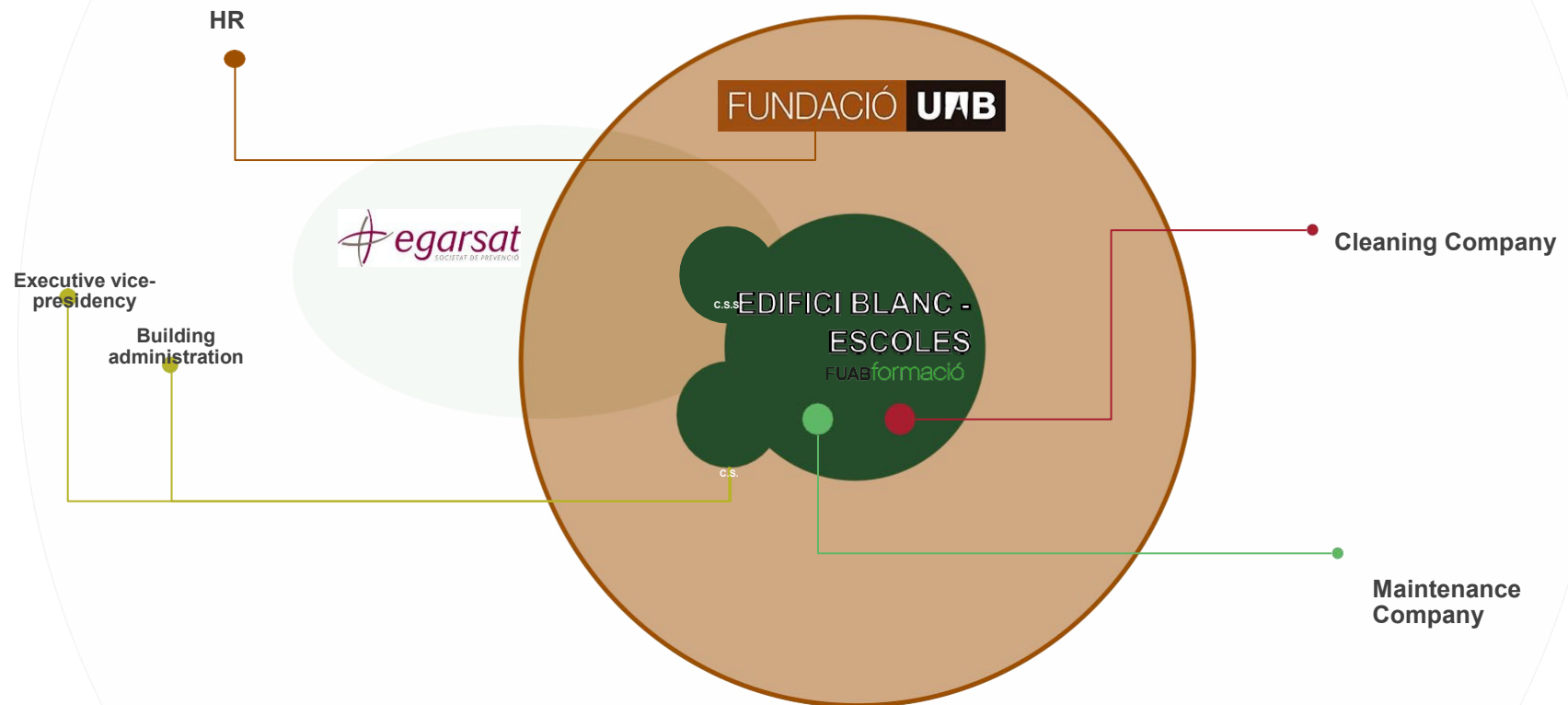
Edifici Blanc - Schools

Stakeholders



Departments involved

Administration



STRUCTURE OF THE PLAN

All preventive and control measures for the staff and contractors of Edifici Blanc - Escoles are described in the "Contingency, continuity and return to activity plan against (coronavirus) COVID-19" prepared by EGARSAT and in the Protocol of return to work. "UAB Corporation" prepared by the Legal and Human Resources Department of the FUAB.

That is why this PCPO provides for a series of standard measures aimed only at students and people who carry out the activity in the Edifici Blanc - Escoles. These measures are:

-
- **Organisational measures** - This document includes 6 organisational measures related to:
 - Face-to-face
 - Vulnerable population segment
 - Distance
 - Use of masks
 - Traceability
 - Movement of people
-
- **Protection measures** - This document includes 2 protection measures according to their size.
 - Collective protection
 - Individual protection
-
- **Hygienic measures** - This document includes 3 hygiene measures in different areas.
 - Hand washing
 - Ventilation and air conditioning
 - Community spaces
-
- **Preventive measures** - This document includes 6 preventive measures in different areas.
 - Information
 - Waste
 - Shared material
 - Water sources
 - Vending machines
 - Elevators
-
- **Cleaning and disinfection protocols** - This document includes 2 types of cleaning protocols.
 - Preventive cleaning
 - Corrective cleaning
-

- **Contingency Plan** - This document lists 4 measures to apply if confirmed cases of infection are detected.
-
- Protection
 - Displacement
 - Communication
 - Activation

ORGANISATIONAL MEASURES

MO.1 ATTENDANCE

- Our intention for 2021 – 2022 is to maximise the amount of face-to-face teaching in activities held at the Edificio Blanco – Escuelas, and our aim is to go back to 100% face-to-face classes when circumstances allow us to do so.
 - For the duration of these exceptional circumstances, Bachelor's and Master's degree courses will maintain their pre-determined teaching modalities. However, virtual sessions may also be arranged as part of any program to ensure the students' learning progress meets their expectations if and when the current health protocol measures prevent the teaching being imparted by other means.
 - In the case of Masters, the option is available in exceptional circumstances to opt for an agreed 100% distance-learning format for the first term of for the whole of 2021-22. This change of modality must be approved by the Vice-Rector of Studies and teaching Innovation before being offered to registering students.
-

MO.2 VULNERABLE POPULATION SEGMENT

- Students have been informed by the sending of document MPP 01 "Preventive and protective measures for students" of the need to inform the Coordination of the studies they are studying of their condition as a vulnerable person in the COVID-19. The Coordination of Studies will study each case to determine what material and system of access to this material will be needed in order to be able to follow the studies normally.
-

MO.3 DISTANCE

- Enclosed teaching spaces. In order to organise the occupation of closed teaching spaces The maximum occupation level of up to 70% of capacity of each teaching space will be strictly adhered to in Edificio Blanco – Escuelas
 - The recommended safety space between any two people when entering or leaving the classrooms must be adhered to.
 - Other enclosed spaces within Edificio Blanco – Escuelas like the Staff Room, the Meeting Room, the Study Classroom or the Students' Office. The minimum interpersonal safety distance for common areas and circulation around the building or as determined by regulations is established at 1.5 metres.
-

MO.4 THE USE OF MASKS

- The use of a mask is mandatory for the entire building with the exceptions established in point 2 of section 2.2 of Resolution SLT / 1429/2020, of 18 June, which adopts basic protection and organisational measures to prevent the risk of transmission and promote the containment of SARS-CoV-2 infection: when there is any type of disease or respiratory difficulty that may be aggravated by the use of a mask or who, due to disability or dependence, do not have of sufficient autonomy to remove the mask or present behavioural alterations that make its use unfeasible.
 - If there is a person in the classroom who is exempt from wearing a mask justified by a medical certificate, they must maintain a minimum distance of 1.5 meters inside the classroom from other classmates. The distribution of other people in the classroom will need to be reviewed.
-

MO.5 TRACEABILITY

- In order to facilitate traceability in the event of a possible infection, the school has a register of potential class attendance. It is also recommended, whenever possible, that students make use, in each classroom, of the same places that they occupy throughout the course in order to be able, if necessary, to limit traceability to the closest circle of people potentially infected.
-

MO.6 CIRCULATION OF PEOPLE

- A series of signs has been set up in all the common areas in order to indicate to the students and users what the circulation directions are in the different spaces of the building. These directions have been established based on the forecast of the density of people circulating at the same time in these spaces and the dimensionsof these spaces.
 - Complementary signs are included in Annex III.
-

PROTECTIVE MEASURES

MP.1 COLLECTIVE PROTECTION

-
- Protective screens have been provided in those workplaces where public service tasks are performed, the safety distance cannot be maintained and close interaction with students is required.
 - The tasting room naturally has screens for each of the places for students.
 - There are also protective screens in the classroom for teachers.
-

MP.2 INDIVIDUAL PROTECTION

-
- The building has courtesy masks to offer to teachers who, for whatever reason, are in the building and need one. We cannot provide these protection mechanisms for students. If they do not have the necessary equipment, they will not be able to access the building, or they will be told to leave the building.
 - Academic Management has gloves for all people who have to use computer rooms.
 - Information on the correct use of this equipment is reinforced in the same computer rooms.
-

HYGIENE MEASURES

MH.1 HAND WASHING

- It is mandatory to wash your hands when accessing or leaving the following areas:
 - Edificio Blanc Schools
 - Classrooms
 - Toilets
 - Other enclosed spaces within Edificio Blanco – Escuelas like the Staff Room, the Meeting Room, the Study Classroom or the Students' Office.
 - Hydro alcoholic solution dispensers are available at the access to all these spaces in order to ensure hand hygiene. These dispensers are periodically checked by the cleaning staff in order to replace the product and ensure its function without interruptions. Annex IV with distribution of dispensers is attached.
 - There is a sign with obligations for students and users where hand washing is required. This sign will be to each and every one of the accesses to each floor of the building, as well as to the main entrance.
 - Specific instructions are available for students and teachers.
-

MH.2 VENTILATION AND AIR CONDITIONING

- All classrooms have windows. The basic criterion is the minimum ventilation of 10 minutes between classes. Teachers must open the windows for at least 5 minutes before the end of classes.
 - Keep the doors open whenever possible.
 - During room cleaning and disinfection operations, windows will be opened whenever possible..
-

MH.3 STUDY ROOMS AND COMMUNITY SPACES

-
 - The time spent in the building is limited to the time needed to complete academic activities. It is not allowed to remain in the corridors of the building or use these spaces as a rest area.
 - Disinfectants and paper for surfaces will be made available to people who use shared work spaces (teachers' rooms and meeting rooms) in order to sanitise spaces and materials before and after use.
-

PREVENTIVE MEASURES

MV.1 INFORMATION

- Students and teachers are informed by sending the instruction MPP 01 “Preventive and protective measures for students” and MPP 02 “Preventive and protective measures for teachers” of the conditions and rules required continue to allow responsible use by all.
 - All this information is reinforced in the same building by means of a sign system. Annex III with information on the signs used is attached.
-

MV.2 WASTE

- A series of specific containers have been set up at different points in the building so that all users can dispose of waste from personal protective measures and others such as gloves, disposable handkerchiefs, etc.
-

MV.3 SHARED MATERIAL

- To minimise the risk of infection by sharing material, equipment, computers, telephones, auxiliary work material, etc., material is made available to teachers to disinfect these materials at the beginning of each class.
-

MV.4 WATER FOUNTAINS

- Drinking directly from water sources is not allowed. They can only be used to fill reusable bottles or glasses, owned by the same users and students and without the bottles touching the tap at any time, as indicated by the corresponding sign. For this reason, it is recommended to use bottles for individual use. A hydroalcoholic gel dispenser will be installed next to each fountain.
-

MV.5 VENDING MACHINES

- Vending machines may be used but payment can only be made by credit or debit card
-

MV.6 ELEVATORS

- Use stairs first and not elevators. The use of elevators is intended for cases of special needs or reduced mobility. If its use is essential, it will be done individually, except when the help of a second person is needed for the mobility and safety of students or other users.
-

CLEANING AND DISINFECTION PROTOCOLS

PN.1 PREVENTIVE CLEANING

- In order to carry out preventive cleaning periodically in the classrooms, common spaces, and toilets, the [operative instruction](#) linked to the UAB Contingency Plan and Organisational Protocol is applicable.
 - All rooms are cleaned and disinfected at least once a day.
 - The products used are validated by the health authorities as products for professional use, [which are authorised for application by the contracted cleaning service](#).
-

PN.2 CORRECTIVE CLEANING

- In the event that the presence of a person in isolation has been confirmed due to a positive diagnosis of COVID-19 in one of our spaces, it will remain closed until action has been taken according to the specifications set out in same [operating instruction](#) for cleaning and disinfection linked to the UAB Contingency Plan and organisational protocol.
 - For both preventive cleaning and corrective cleaning, at the end of the action it will be necessary to disinfect the elements and utensils that have been used in the event that these are not disposable.
-

CONTINGENCY PLAN

PC.1 PROTECTION

-
- If a person shows symptoms of COVID-19 during their presence in the school, it is necessary to change their mask immediately for another of a surgical type if they are not already wearing it. The blue / green side should be worn on the outside.
-

PC.2 DISPLACEMENT

-
- The person will immediately go to their own home in order to avoid contact with other users.
-

PC.3 COMMUNICATION

-
- The person will call 061 to report their symptoms and follow the recommended instructions.
 - If the health services indicate that preventive isolation must be carried out, this must also be notified to Edifici Blanc - Escoles through the following channels:
 - Students: they must inform the degree coordination in order to communicate this to the Primary Care Unit of the Health Care Service (unitat.atencio.primaria@uab.cat or to tel. 93 581 18 00).
 - Teachers: you must contact the study coordination and Human Resources (rh.fuab@uab.cat).
-

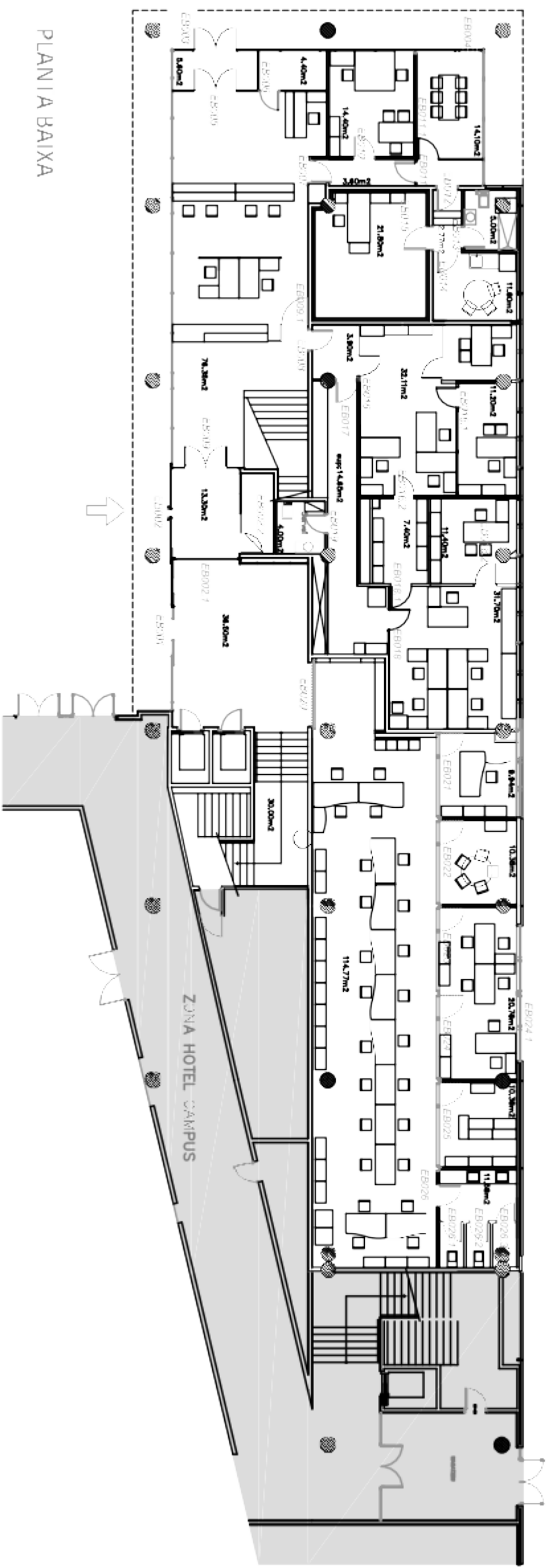
PC.4 ACTIVATION

-
- The disinfection instruction provided in the cleaning operating instruction will be executed.
 - The measures specified by the health authorities will be applied.
 - The measures specified in point 7 of the "Contingency, continuity and return to activity plan against (Coronavirus) COVID-19" prepared by EGARSAT for all the companies of the UAB Corporation will be applied.
 - This activation will also be triggered in the event that the health authorities declare a user, student or teacher to be in close contact with a person infected with the virus.
-

Follow the instructions in the "Containment Procedure".

ANNEX I

Plans of the building

[illegible]



PLANTA PRIMERA

DEPARTAMENT		PLA NO. 02	
MAINTENIMENT CIBES		PLANTA PRIMERA	
C/ de a Via SN		E: 1100	
Campus UAB		E: 1200	
3022		DIN A1	
		DIN A3	

03

PLANT SEGMENT

EDIFICIO BLANCO

DEPARTMENT
MAINTENIMENT CIBRES

ZONA HOTEL CAMPUS

ANNEX II

Contingency procedure

In accordance with the latest regulatory changes and given the health situation related to Covid - 19, it is no longer mandatory to wear a mask in classrooms or inside buildings. It is also not necessary to communicate the absence due to this illness to the School, nor should the School communicate the existence of positives in the classrooms to the students.

The rest of the protection measures, such as hand hygiene or classroom ventilation, are still in force.

The purpose of this document is to describe the preventive and protective measures against COVID-19 that must be taken by all students in FUAB schools, regardless of the type of training program they are studying, for their own safety and that of everyone.

The prevention and protection measures described in this document complement those established by the health authorities by applying the criteria developed in Resolution SLT /2704/2021 of September 2, to the University Sector Plan approved within the framework of the Action Plan of the PROCICAT, complying with the indications of the UAB Contingency Plan and organisational protocol for students in the 2021-2022 academic year. It should be borne in mind that the measures provided for in this Protocol are subject to possible changes depending on how the situation develops and the recommendations and rules detailed by the relevant authorities.

The FUAB have provided the means to facilitate the fulfilment of these preventive measures but it is necessary to remember that the task of control and mitigation of the current sanitary crisis caused by COVID-19 is a shared responsibility. For all these reasons, and for security reasons, the following measures have been provided:

GENERAL MEASURES

CONDITIONS FOR FACE-TO-FACE INCORPORATION

Do not travel to school if you belong to one of the groups considered vulnerable to COVID-19 and you have restrictions on carrying out academic activity. In this case, contact the coordination of the course you are studying by e-mail.

Do not travel to school if you have a fever or other symptoms that are compatible with COVID-19. In this case, contact your doctor or Primary Care Centre (CAP). If confirmed, you must communicate this, by e-mail, to the coordination of the course you are studying.

Do not travel to school if you are in a situation of preventive confinement. Contact, via e-mail, the coordination of the courses you are studying.

Only go to school on those days when you have a face-to-face class scheduled for your group.

The preventive measures of this protocol must be observed both inside and outside of the building.

PROTECTION DURING PRESENCE IN THE BUILDING

The use of the approved facemask for the prevention of COVID-19 infection is MANDATORY throughout the building and at all times except in the cases provided for in the regulations.

If a person is in this exceptional situation, they must notify the Coordination of their activity by means of a medical certificate so that they can take their situation into account.

Hygienic conditions for respiratory symptoms must be met (avoid coughing directly into the air, cover your mouth with the inside of your forearm in these cases, and avoid touching your face, nose, and eyes).

Limit the time spent in the building to the time required to complete your academic activities. Seats and benches in the hallways which have been adapted to meet the current regulations are available for use by students or staff.

As a general rule, avoid close contact with other people, and keep a safe distance.

The preferred direction during circulation around the building is always on your right. In all the corridors, stairs and landings, please keep to your right.

Use the stairs first and not the lifts. The use of lifts is only permitted if it is essential or in cases of reduced mobility.

Restricted use of common equipment such as printers. Use them only when really necessary, and always take extreme hygienic measures by washing your hands before and after use.

Water cannot be drunk directly from water sources. Only use water sources to fill glasses or bottles for individual use.

Always follow the safety instructions specified on the information signs distributed throughout the building.

If you experience symptoms that are compatible with COVID-19, notify your teacher. Return home and contact 061.

**PROTECTION AT
CLASSROOM**

Make sure you follow the check-in and checkout times in the classroom.

Hand sanitisation is required at the entrance and exit of classrooms.

Respect the preferred direction of entry and exit to classrooms as indicated. If not indicated, give way to those exiting before you enter. Entry and exit must be carried out in an orderly manner, avoid overtaking other people.

Once in the classroom, go directly to seat. Occupy the same seat throughout the course

Students must wear a mask at all times.

Do not leave any sanitary equipment (handkerchiefs, masks, gloves) in the classroom, and dispose of cleaning material and protective equipment when not in use. Keep your classroom space clean and tidy and use the bins. There are specific bins for this waste at the entrance of each floor.

Avoid sharing materials and equipment. If necessary, clean them before and after each exchange..

Computer rooms may only be used in the presence of a teacher.

If any student wishes to use gloves during a class, s/he will have to ask for them at the Gestión Académica office before the class begins.

The study room and the office for students will remain open. The Study Classroom and the Students' Office are open, but precautions must be taken when using them. Wash your hands before entering and after leaving, and respect established safety distancing.

Respect at all times the instructions for compliance with the preventive and protective measures made by teachers.

THANK YOU FOR YOUR COLLABORATION

In accordance with the latest regulatory changes and given the health situation related to Covid - 19, it is no longer mandatory to wear a mask in classrooms or inside buildings. It is also not necessary to communicate the absence due to this illness to the School, nor should the School communicate the existence of positives in the classrooms to the students.

The rest of the protection measures, such as hand hygiene or classroom ventilation, are still in force.

The purpose of this document is to describe the preventive and protective measures against COVID-19 that must be taken by all FUAB teachers, regardless of the type of training program to which they are linked, for their own safety and that of everyone.

The prevention and protection measures described in this document complement those established by the health authorities by applying the criteria developed in Resolution SLT / 2704/2021 of September 2, to the University Sector Plan approved within the framework of the action plan of the PROCICAT, which complies with the indications of the contingency plan and organisational protocol of the UAB, the action plan for the 2021-2022 academic year for schools in the framework of the pandemic. It should be borne in mind that the measures provided for in this protocol are subject to possible changes depending on how the situation develops and the recommendations and rules detailed by the relevant authorities.

The FUAB have provided the means to facilitate the fulfilment of these preventive measures, but it is necessary to remember that the task of control and mitigation of the current sanitary crisis caused by COVID-19 is a shared responsibility. We must also ensure compliance with the preventive measures put in place in the classroom for students during their learning activity.

GENERAL MEASURES

CONDITIONS FOR FACE-TO-FACE INCORPORATION

Do not come to Edifici Blanc premises if you belong to one of the groups considered vulnerable to COVID-19 and you have restrictions on carrying out academic activity, indicated by the Prevention Service. In this case, or in case of doubt, contact the coordination of studies, the health service of the occupational risk prevention service according to the established procedure, and Human Resources (rh.fuab@uab.cat)

Do not come to Edifici Blanc premises if you have a fever or other symptoms compatible with COVID-19. In this case, contact your doctor or Primary Care Centre (CAP). If confirmed, you must inform the coordination of studies and Human Resources (rh.fuab@uab.cat)

Do not come to Edifici Blanc premises if you are in a situation of preventive confinement. Contact the coordination of studies and Human Resources (rh.fuab@uab.cat)

Only travel to Edifici Blanc on those days when you have a face-to-face activity scheduled for your group.

All tutorials will be done, preferably, virtually.

If a student wants to do face-to-face tutoring, these can be done in the tutoring office on the 1st floor, in the meeting room on the 3rd floor, or in any of the 3 meeting rooms in the teachers' room on the 3rd floor. The round tables in the shared offices have been removed due to prevention measures

PROTECTION DURING PRESENCE IN THE BUILDING

The use of an approved facemask for the prevention of COVID-19 infection is MANDATORY in all areas of the building and at all times except in the following cases:

- a) People who have any type of illness or respiratory difficulty that may be aggravated by the use of the mask.
- b) People who, due to their situation of disability or dependency, do not have the autonomy to remove the mask.

Persons exempt from wearing a mask in accordance with cases a) and b) of the previous section must notify this in advance with a medical certificate to the coordination of the activity and a Human Resources (rh.fuab@uab.cat). They will inform them of the specific measures they must comply with according to the specifications of the health authorities.

Hygienic conditions for respiratory symptoms must be met (avoid coughing directly into the air, cover your mouth with the inside of your forearm in these cases, and avoid touching your face, nose, and eyes).

Limit the time spent in the building to the time required to complete your academic activities.

As a general rule, avoid close contact with other people, and keep a minimum safety distance, especially when accessing classrooms and conference rooms.

The preferred direction during circulation around the building is always on your right. In all the corridors, stairs and landings, please keep to your right.

Use the stairs first and not the lifts.

Use of common equipment, such as printers, is restricted. Use them only when really necessary, always taking extreme hygiene measures, washing your hands before and after use.

Water cannot be drunk directly from water sources. Only use water sources to fill glasses or bottles for individual use.

Always follow the safety instructions specified on the information signs distributed throughout the building.

If you experience symptoms that are compatible with COVID-19, Return home and contact 061

MEASURES IN CLASSROOMS

Make sure you follow the check-in and checkout times in the classroom.

If any tables or chairs are moved during a class or any other changes are made, at the end of the class the classroom must be left as it was found.

Hand sanitisation is required at the entrance and exit of classrooms and conference rooms.

Classroom windows must be opened at least 5 minutes before the end of class.

Clean your hands before using the computer, markers, and exclusive classroom materials.

Remember to dispose of cleaning supplies and protective equipment when not in use.
Keep your workspace clean and tidy.

USE OF COMPUTER CLASSROOMS:

Students will not be allowed to enter computer classrooms until the teacher is inside.

Any teacher who has to use any of the I.T. rooms must collect the key at the *Gestión Académica* office and return it when the class finishes.

If any student wishes to use gloves during a class, s/he will have to ask for them at the *Gestión Académica* office before the class begins

ÚS SALA DE PROFESSORS

The building has two teachers' rooms, one on the 2nd floor and another on the 3rd floor. Both rooms have been adapted by separating the tables and placing front partitions between them.

In both rooms there is a hydrogel and paper dispenser, so that the workspace or the table in the classroom or in the tutoring room can be cleaned with hydrogel.

In the teachers' room, and tutoring rooms, both on arrival and on departure, you must wash your hands and clean the workspace.

ENSURE THAT ATTENDEES OR STUDENTS COMPLY WITH:

The priority direction at the entrance to the room.

Hand hygiene when entering and leaving the room or classroom.

The CORRECT use of masks.

Do not leave hygienic waste at the end of the session (handkerchiefs, masks, gloves).

THANK YOU FOR YOUR COLLABORATION

PREVENTIVE AND PROTECTIVE MEASURES FOR COVID-19

The purpose of this document is to inform all those linked to the UAB Foundation of the preventive and protective measures against the COVID-19 virus that will be applied outside the l'Edifici Blanc and in the access garden to Casa Convalescència.

The UAB Foundation has prepared this document, included in its Contingency and Organisation Plans for Schools and Casa Convalescència, to include the set of organisational, hygienic, preventive and cleaning measures:

- To guarantee the protection and security of the members of the university community that carry out their activity in the buildings of the UAB Foundation.
- Respect at all times legally required hygienic and organisational measures.

• Measures

- Limit the time spent in outdoor spaces to the strictly necessary breaks scheduled during the activities of the same day.
- Avoid close contact with other people. In both indoor and outdoor spaces, the interpersonal physical safety distance is set at 1.5 meters. If you have any of the conditions considered vulnerable to COVID-19, avoid staying in these spaces if more people are present.
- To facilitate compliance with this safety distance, the ashtrays in these spaces have been covered or removed, thus preventing the involuntary concentration of people around these elements.
- If you smoke, drink or eat in these spaces, minimise the time spent without a mask to what is strictly necessary and try to maintain interpersonal physical distance. Do not loiter in the usual walking spaces.
- Hygienic conditions for respiratory symptoms must be met (avoid coughing directly into the air, cover your mouth with the inside of your forearm, and avoid touching your face, nose, and eyes)
- Respect the circulation rules indicated in these outdoor spaces. If there is no signage, walk to your right and be sure to leave more than 1.5 metres of interpersonal physical distance if you cross paths with other people.
- At the exits of the buildings you will find hydro alcoholic gel dispensers. Use them both when leaving and when entering.
- The frequency of cleaning the street furniture in these spaces cannot guarantee disinfection after each use. That's why you need to follow extreme hand hygiene measures before and after using them.
- These messages are reinforced with specific signals.

ANNEX III

Signage

ANNEX

Conjunt de senyals emprades per reforçar el missatge de les mesures preventives contra el COVID-19

- Cartells informatius:
 - Cartell per l'ús de les fonts d'aigua durant excepcionalitat sanitària
 - Cartell per l'ús de les impressores durant excepcionalitat sanitària
 - Cartell per la correcta segregació dels residus sanitaris Covid-19
 - Cartell resum del protocol de mesures preventives i de protecció per a l'alumnat
 - Cartell per a la correcta retirada de guants de protecció
- Icones informatives:
 - Icona d'aforament màxim d'1 persona
 - Icona d'aforament màxim de 2 persones
 - Icona d'aforament màxim de 3 persones
 - Icona d'aforament màxim de 4 persones
 - Icona d'aforament màxim de 5 persones
 - Icona de cadira en ús (tick)
 - Icona de no passar o no utilitzar
 - Icona de direccionalitat de la via de pas
 - Icona per mantenir distància de seguretat (peus)
 - Icona per ventilació de sales
 - Icona dispensador d'hidrogel
 - Icones informatives per un correcte rentat de mans
 - Icona d'ús de mascareta
 - Icones distància professorat per no ser contacte estret

CARTELLS INFORMATIUS

Cartell per l'ús de les fonts d'aigua durant excepcionalitat sanitària



Ús de les fonts d'aigua durant l'excepcionalitat sanitària
Uso de las fuentes de agua durante la excepcionalidad sanitaria
Use of drinking water fountains during the health emergency



Les fonts d'aigua només es poden utilitzar amb un got o una ampolla d'ús individual.



Las fuentes de agua sólo se pueden utilizar con un vaso o una botella de uso individual.



Water fountains may only be used with a personal glass, cup or bottle.



CARTELLS INFORMATIUS

Cartell per l'ús de les impressores durant excepcionalitat sanitària

- 🇪🇸 Ús de les impressores durant l'excepcionalitat sanitària
- 🇪🇸 Uso de las impresoras durante la excepcionalidad sanitaria
- 🇬🇧 Use of printers during the health emergency


- 🇪🇸 Les impressores només s'han d'utilitzar quan sigui imprescindible.
Cal rentar-se les mans abans i després de cada ús amb aigua i sabó o amb la solució hidroalcohòlica.
- 🇪🇸 Las impresoras únicamente se tienen que utilizar cuando sea imprescindible. Se deben lavar las manos antes y después de cada uso con agua y jabón o con la solución hidroalcohólica.
- 🇬🇧 Please use printers only when it is absolutely necessary. You must wash your hands with soap and water, or by using hand sanitizer liquid, before and after using the printer.




CARTELLS INFORMATIUS

Cartell per la correcta segregació dels residus sanitaris Covid-19

-  **Residus sanitaris covid-19**
-  **Residuos sanitarios covid-19**
-  **Covid-19 related waste**

 **Contenedor exclusiu per als residus següents:**

- Mascaretes
- Guants
- Material potencialment contaminat

 **Contenedor exclusivo para los siguientes residuos:**

- Mascarillas
- Guantes
- Material potencialmente contaminado

 **Container, only for the following waste products:**

- Masks
- Gloves
- Material which may have been contaminated



CARTELLS INFORMATIUS

Cartell resum del protocol de mesures preventives i de protecció per a l'alumnat

Resum del protocol de mesures preventives i de protecció per a l'alumnat.
Resumen del protocolo de medidas preventivas y de protección para el alumnado.
Summary of our protocol of measures for students' protection.

<p> En cas de símptomes de Covid-19 no venir o tornar a casa, posar-se en contacte amb el 061 i comunicar-ho a la coordinació dels estudis.</p> <p> En caso de síntomas de Covid - 19 no venir o volver a casa, ponerse en contacto con el 061 y comunicarlo a la coordinación de los estudios.</p> <p> If you have any symptoms of Covid-19, do not travel to or from school / home. Dial 061 and inform your study coordinator.</p>	
<p> Ús obligatori de mascareta.</p> <p> Uso obligatorio de mascarilla.</p> <p> You must wear a mask at all times on school premises.</p>	
<p> Higiene de mans a l'entrar i al sortir de l'aula.</p> <p> Higiene de manos al entrar y al salir de clase.</p> <p> Clean your hands whenever you enter or leave a classroom.</p>	
<p> Venir a l'escola només els dies amb classe presencial.</p> <p> Venir a la escuela sólo los días con clase presencial.</p> <p> You may only come to the school on days when you have a class to attend.</p>	
<p> Circular preferentment per la dreta.</p> <p> Circular preferentemente por la derecha.</p> <p> Keep to the right when walking around school premises and grounds.</p>	
<p> Seure als llocs habilitats.</p> <p> Sentarse en los lugares habilitados.</p> <p> Only sit in the designated places.</p>	
<p> A l'ascensor, mascareta obligatòria</p> <p> En el ascensor, mascareta obligatoria</p> <p> In the elevator, mandatory mask</p>	
<p> Recorregut recomanat / No passar.</p> <p> Recorrido recomendado / No pasar.</p> <p> Recommended route / No entry.</p>	
<p> Respectar la distància interpersonal de seguretat.</p> <p> Respetar la distancia interpersonal de seguridad.</p> <p> Keep your distance from others for personal safety.</p>	
<p> Les fonts d'aigua només es poden utilitzar amb un got o una ampolla d'ús individual</p> <p> Las fuentes de agua sólo se pueden utilizar con un vaso o una botella de uso individual.</p> <p> Water fountains may only be used with a personal glass, cup or bottle.</p>	
<p> Evitar utilitzar equips i dispositius d'altres o d'ús comunitari com fotocopiadores. Si no és possible, higienitzar les mans abans i després de fer-los servir.</p> <p> Evitar utilizar equipos y dispositivos de otros o de uso comunitario como fotocopadoras. Si no es posible, higienizar las manos antes y después de su uso.</p> <p> Avoid using communal equipment, like photocopiers. If you cannot avoid doing so, thoroughly clean your hands before and after use.</p>	
<p> Dipositar els residus als llocs indicats.</p> <p> Depositar los residuos en los lugares indicados.</p> <p> Throw away any litter or trash in the designated places.</p>	

Resum del protocol de mesures preventives i de protecció per al públic.
Resumen del protocolo de medidas preventivas y de protección para el público.
Summary of our protocol of measures for public's protection.

No mantingueu presència a la plaça si no teniu més activitats a l'edifici.

No mantengáis presencia en la plaza si no os quedan más actividades en el edificio.

Do not loiter in the square or remain there if you are not entering or leaving the building.

Respectar la distància interpersonal de seguretat.

Respetar la distancia interpersonal de seguridad.

Keep your distance from others for personal safety.

Circular preferentment per la dreta.

Circular preferentemente por la derecha.

Keep to the right when walking.

Ús obligatori de mascareta.

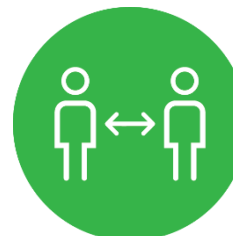
Uso obligatorio de mascarilla.

You must wear a mask at all times.

Higiene de mans a l'entrar i al sortir de l'edifici.

Higiene de manos al entrar y al salir del edificio.

Clean your hands whenever you enter or leave the building.



CARTELLS INFORMATIUS

Cartell per a la correcte retirada de guants de protecció



ICONES INFORMATIVES

- Icona d'aforament màxim d'1 persona
- Icona d'aforament màxim de 2 persones
- Icona d'aforament màxim de 3 persones
- Icona d'aforament màxim de 4 persones
- Icona d'aforament màxim de 5 persones



ICONES INFORMATIVES

Icona de cadeira en ús (tick)

Icona de no pasar o no utilizar



ICONES INFORMATIVES

Icona de direccionalitat de la via de pas



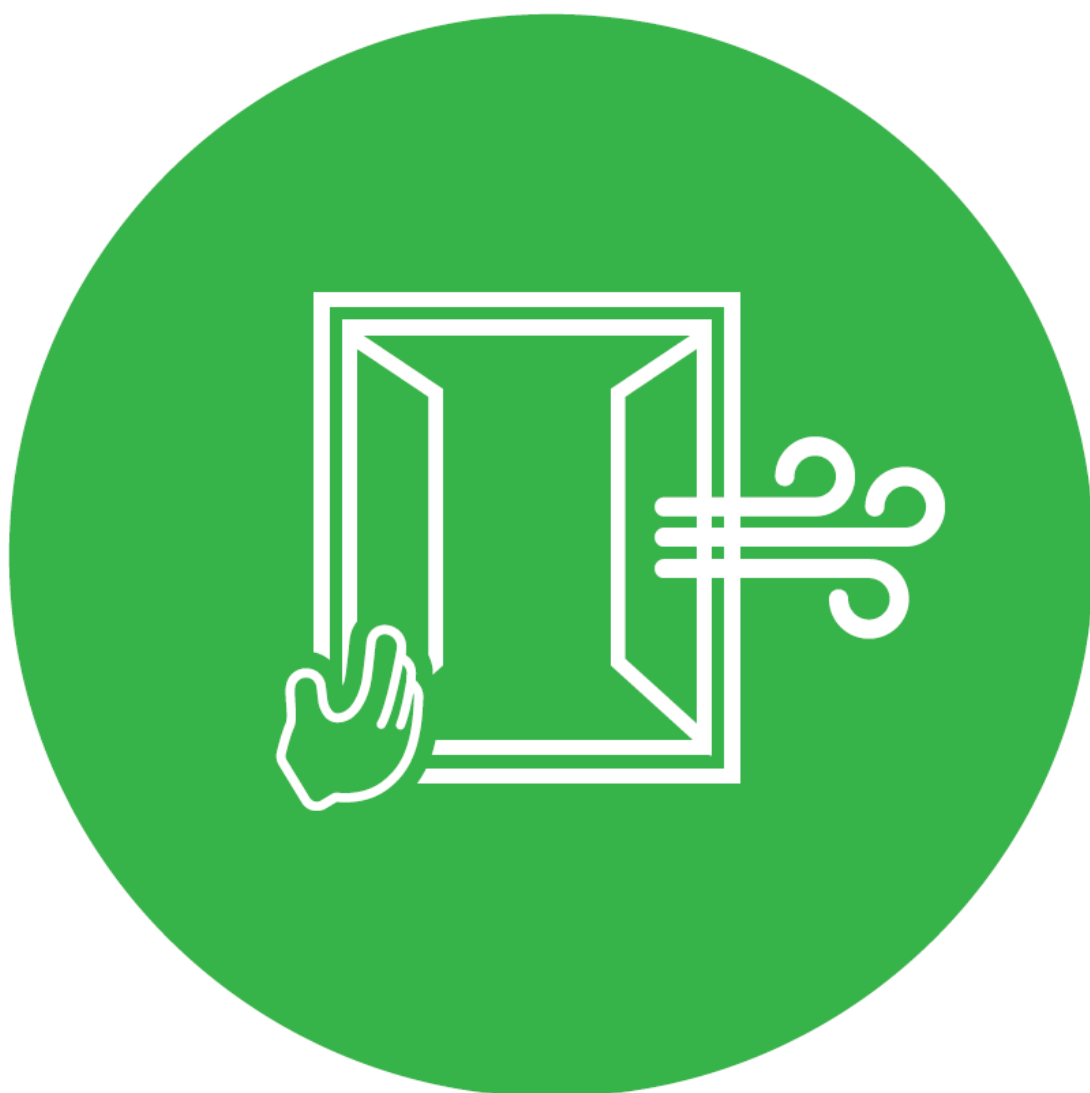
ICONES INFORMATIVES

Icona per mantenir distància de seguretat (peus)



ICONES INFORMATIVES

Icona per ventilació de sales



ICONES INFORMATIVES

Icona dispensador d'hidrogel



ICONES INFORMATIVES

Icones informatives per un correcte rentat de mans

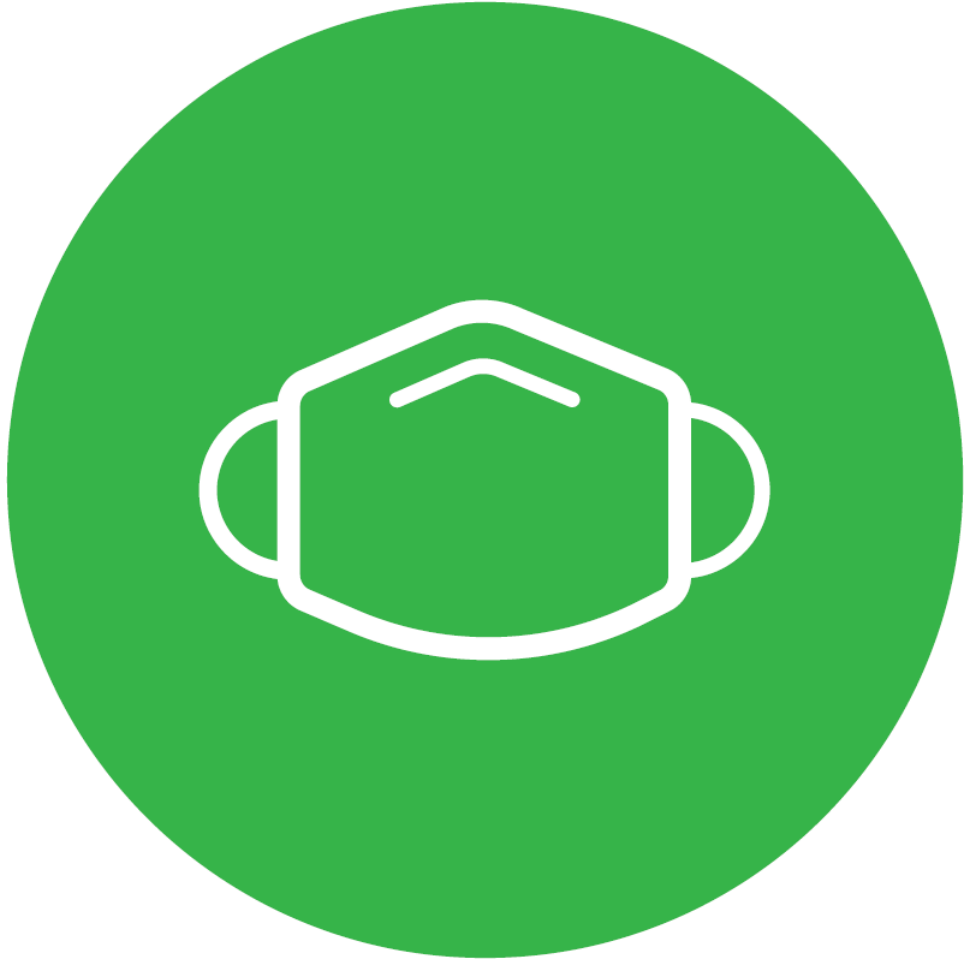
40"-60"





ICONES INFORMATIVES

Icones d'ús de mascareta



ICONES INFORMATIVES

Icones distància professorat per no ser contacte estret



ANNEX IV

Dispensers

