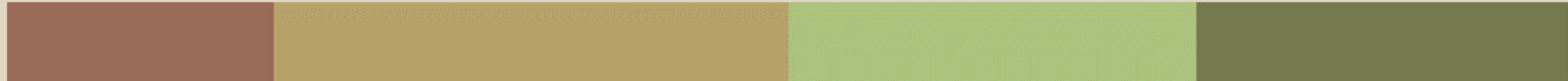


#UABREFUGI SCHOLARSHIP 2026-2027



2025-2026

**COOPERATION AREA AND EDUCATION FOR GLOBAL
JUSTICE**

Programa
Refugi

fas.refugi@uab.cat

Fa**S** Fundació
Autònoma
Solidària UAB

UAB Universitat
Autònoma
de Barcelona



SOCIAL ENTITY WITH THE MISSION OF PROVIDING TOOLS TO THE UNIVERSITY COMMUNITY, WHILE REMAINING ACTIVE, CRITICAL, AND AN AGENT OF SOCIAL TRANSFORMATION.



UAB

Universitat Autònoma de Barcelona

FAS

Fundació Autònoma Solidària UAB

Coneix la FAS

Acció Social

Cooperació i EpJG

Refugi UAB

Voluntariat

UAB Refugi

Fundació Autònoma Solidària > Refugi UAB > Presentació

Programa Refugi

Presentació

Objectius

Beques #UABRefugi

Guia benvinguda estudiants Refugi

Mentoria

Sensibilització i formació

Presentació

Refugi


El Programa Refugi de la UAB contribueix a la millora de les pràctiques universitàries a favor dels drets de les persones desplaçades de forma forçosa i/o a la recerca de refugi i, per afavorir la reconstrucció de les seves vides i futurs. En un escenari global marcat per l'augment de desplaçaments forçosos i la continuada vulneració de drets de les persones migrades i refugiades, cal també des de la universitat donar resposta a aquesta situació.

Aquest programa que va néixer el 2016 és desenvolupat per la Fundació Autònoma Solidària (FAS) en coordinació amb diversos actors universitaris.

El programa s'articula al voltant de les línies d'acció següents: formació, sensibilització i participació amb un eix transversal que és el treball en xarxa.

I les principals accions que desenvolupa són:


Acompanyament personalitzat



Acompanyament personalitzat: orientació acadèmica, acompanyament en la legalització de la documentació, assessorament legal i facilitació d'altres serveis (llengües, feina, salut...).

[Descarrega't la guia de benvinguda a l'estudiant per saber més de l'acompanyament](#)

Beques



Les Beques #UABRefugi afavoreixen l'accés als estudis superiors com a dret fonamental de les persones que han patit un desplaçament forçós i/o es troben en situació de cerca de refugi i garanteixen la igualtat de condicions en l'accés a l'educació superior.

[Més informació](#)

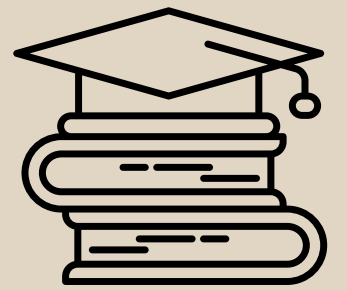
Programa Refugi UAB

Plaça Cívica. Local 02
(al costat de L'Òptica Universitària)
Campus UAB. 08193
Bellaterra (Cerdanyola del Vallès)

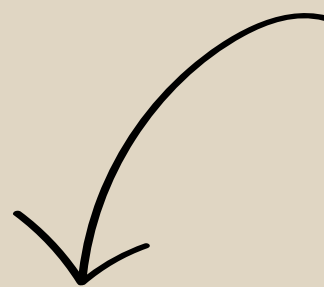
Horari d'atenció al públic: De dilluns a dijous de 10 a 17h i divendres de 10 a 14h.

Tel. 93 581 40 41
fas.refugi@uab.cat

What is the Refuge Program?



- The Refuge Program is designed for asylum seekers and individuals who have faced forced displacement. It aims to foster inclusion and help displaced students access university studies.



With this objective, the university has created the #UABRefugi scholarship.

What does the #UABRefugi Palestine scholarship cover?

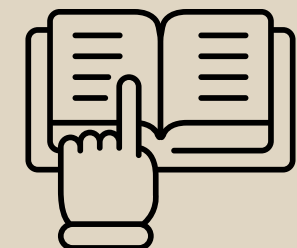
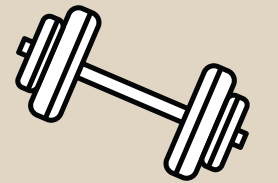
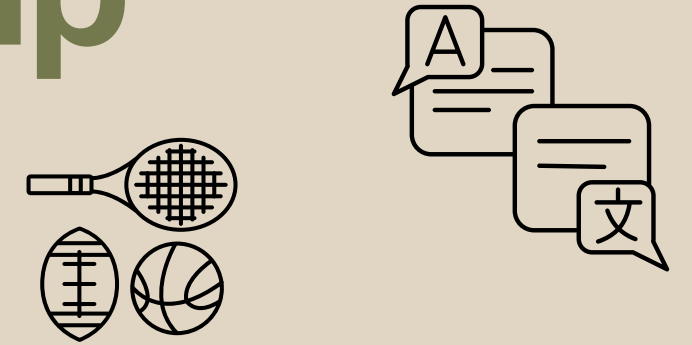


- Tuition fees
- • Visa management fees
- • Travel costs
- • Housing costs, with the option to live in the University Residence Hall (deducted from the monthly allowance)
- • Monthly allowance of 1,100 euros
- • Additional monthly support for study needs
- • Expenses for translating, legalizing, and validating the documents needed for admission and degree issuance.

Other benefits of the scholarship

ACCESS TO SERVICES

- Language courses at the UAB Language Service
- Access to UAB sports facilities (SAF)
- Legal advice
- Access to health and mental health services
- Access to the Mentorship program



Who can apply for the scholarship?

- People who live in Gaza and have seen their studies interrupted because of the war.
- People who have completed a minimum of 30 ECTS credits of a Bachelor's degree at the university and had to interrupt their studies because of the war.
- People who have already obtained a university degree and wish to continue their studies by pursuing a Public and Official Master's degree at UAB.
- People who have a Master's degree and want to begin or continue Phd studies.

What do you need to apply for the scholarship?

1

First, you must read the call for applications and decide what you want to study at UAB!

For Bachelor's Degree

Check here (UAB catalog)
the list of available
Bachelor's degrees.

For Master's Degree

Check here (UAB catalog)
the list of available
Master's degrees.

For PhD

Check here (UAB catalog)
the list of available PhD
programms.



We only cover PUBLIC and OFFICIAL programs.

- To check if a program is public: it must be offered by a UAB-owned center (not by an affiliated center).
- For a doctorate: it must be pursued at the Doctoral School (not at affiliated research centers).
 - To know if a Master's is official: it must be labeled "Máster Universitario de la UAB."

And make sure you meet the academic admission requirements! To do this, we recommend completing the self-assessment questionnaire before applying for the scholarship.

What do you need to apply for the scholarship?

2

Prepare your documents!

Required Documentation

- Minimum of 1 year valid passport
- Visa application documents (criminal record, health record, parents passport/ID/Death certification, power of attorney...)
- Academic transcript of the studies completed at your home university, preferably legalized and translated
- Official diploma of completed studies, preferably legalized (for access to a Master's or Doctorate)
- Motivation letter for studying at UAB
- Curriculum Vitae (CV)
- Selfassessment
- Signed declaration of responsibility (we will send it to you if you are pre-selected)

What do you need to apply for the scholarship?

2

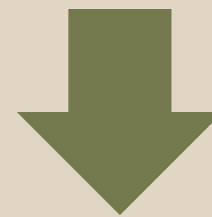
Prepare your documents!

Recomended Documentation

- Language certificate (minimum B2 level) in the language in which the requested study program is taught
- Curriculum of previous university studies (if available)
- Letters of recommendation: from university professors, social organizations, employers...(if available)
- Diplomas of other studies that do not grant direct access to the requested program: high school, specialization courses, other degrees

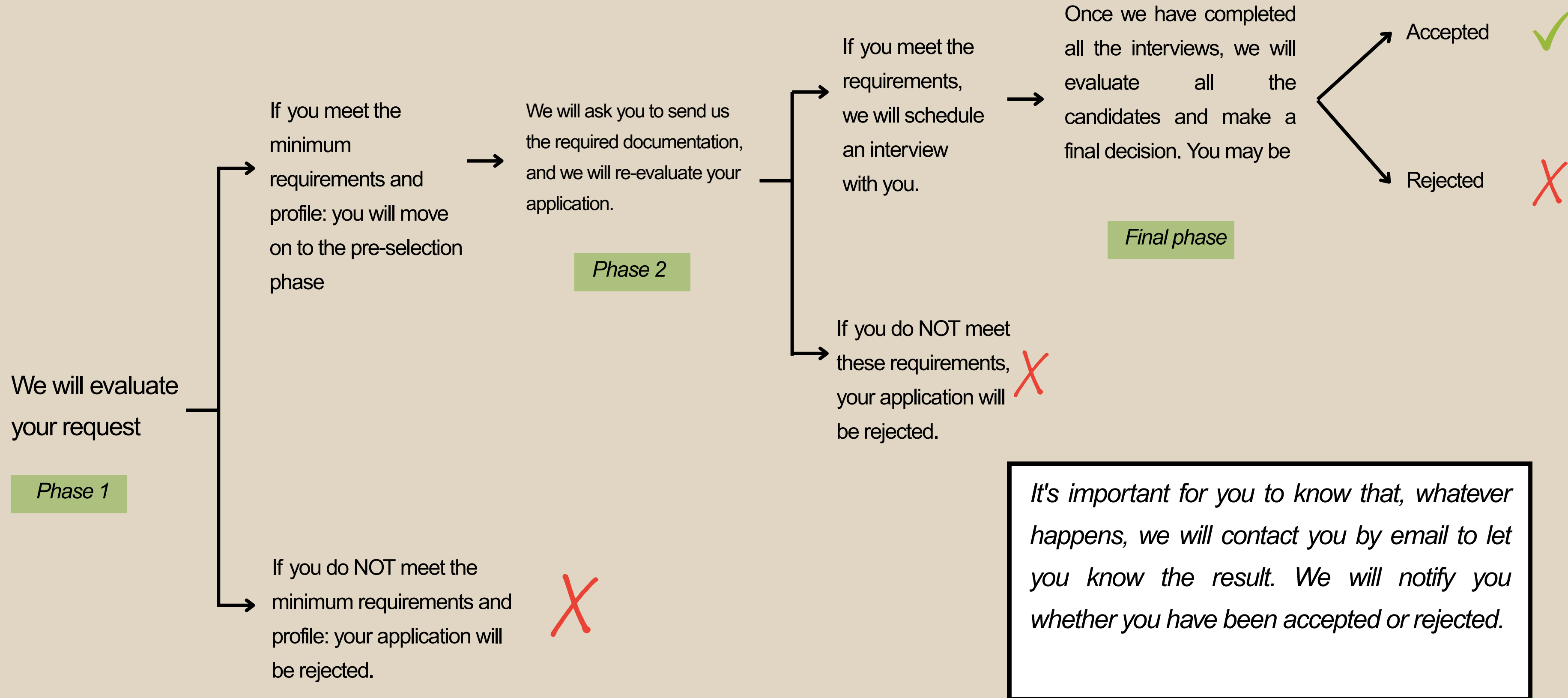
HOW TO APPLY FOR THE SCHOLARSHIP?

You will need to fill out the form



It will be published in the following link

What happens next?



Programa Refugi

Fa\$ Fundació
Autònoma
Solidària UAB

UAB Universitat
Autònoma
de Barcelona

fas.refugi@uab.cat
suport.uabrefugi@uab.cat

