

MOBILITY PLAN OF THE UNIVERSITAT AUTÒNOMA DE BARCELONA. BELLATERRA CAMPUS

MOBILITY OBJECTIVES AND SCENARIOS



MOBILITY BOARD OF THE UNIVERSITAT AUTÒNOMA DE BARCELONA

Mobility Plan of the Universitat Autònoma de Barcelona. Bellaterra campus

Lluís Ferrer i Caubet, Rector of the UAB

Manel Nadal i Farreras, Secretary for Mobility of the Generalitat de Catalunya

Technical direction:

Rafael Requena Valiente, Mobility Manager of the UAB

Lluís Alegre Valls, Head of Mobility Service at the ATM

Miguel A. Dombritz Lozano, Head of Mobility and Large Infrastructures at DPTOP

Maite Pérez Pérez, Head of the Mobility Department at IERMB

Technical Contributors:

Team of the **Institute of Regional and Metropolitan Studies of Barcelona (IERMB)**

Consulting:

Carme Miralles-Guasch, Department of Geography of the UAB

November 2008

- What university do we have?
 - Why is it unique?
- What university do we want?
 - 2006-2009 Steering Plan
- What mobility do we want?
 - UAB Strategic Accessibility Plan
- Current mobility
- Tendential future mobility
- Target future mobility

What university do we have?

- A university that is international, with a heavy emphasis on scholarly investigation and research
- A benchmark university
- A competitive university
- A university campus that tends towards multifunctionality
- It is part of a territory of knowledge
 - UAB + Technology Park + Management Centre
- Metropolitan hub in the second ring of the Barcelona Metropolitan Region

El Campus de Bellaterra
de la UAB és
SINGULAR

Why is it unique?

■ Because of its **LOCATION**

- Peripheral, suburban location
- Connected to the main roadway and railway networks

■ Because of its **FUNCTIONALITY**

- University degrees, investigation and research
 - It is the home to more than 20 faculties, schools and research institutes and centres
- Location of companies outside the sphere of education
 - It offers a wide range of services and activities

■ Because of its **POPULATION**

- University community: students, professors, researchers, administrative and service staff
- Non-university community: visitors, workers at companies outside the sphere of education

What university do we want?

- 2006-2009 STEERING PLAN → 2012
 - Training strand
 - Cutting-edge university; high-quality, recognised teaching; meets educational demands
 - Research and knowledge transfer strand
 - University that is intensive in basic research; stimulates applied research and knowledge transfer; hub attracting scholars and businesses
 - Relationship with the environs and society strand
 - University that occupies a prominent place among European and international universities
 - People strand
 - University where you can study, teach, research, work, live and coexist peacefully
 - Working to **maximise the accessibility** of all the members of the university community and other users of the Bellaterra campus
 - Resources strand
 - Responsible, efficient, active, transparent, equitable university
 - Institutional and internal organisation strand
 - Democratic and participative university with a flexible structure and organisation

■ UAB STRATEGIC ACCESSIBILITY PLAN

□ MAIN INSPIRATIONS

- ACCESSIBILITY
- SUSTAINABILITY
- SAFETY
- EQUITABILITY

□ MOBILITY MODEL: SUSTAINABLE, SAFE AND EQUITABLE

□ STRATEGIC LINES

- Management of the mobility generated by the UAB
- Encouraging collective transport
- Encouraging displacements made on foot
- Achieving universal accessibility on the Bellaterra campus
- Encouraging displacements made on bicycle
- Encouraging a more rational use of private vehicles
- Raising the university community's awareness
- Encouraging the university community's participation in mobility and accessibility issues
- Updating the UAB's PERI according to the objectives and criteria of the Law on Mobility of Catalonia

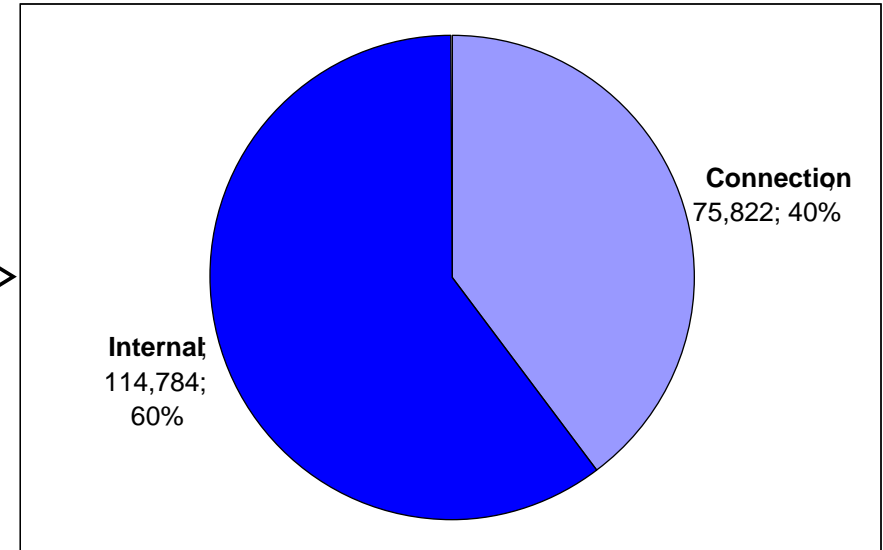
Current mobility

- Displacements generated on campus daily

**220,000
displ./day**

University
community:
190,000 displ./day

Non-university community:
30.000 access displ./day

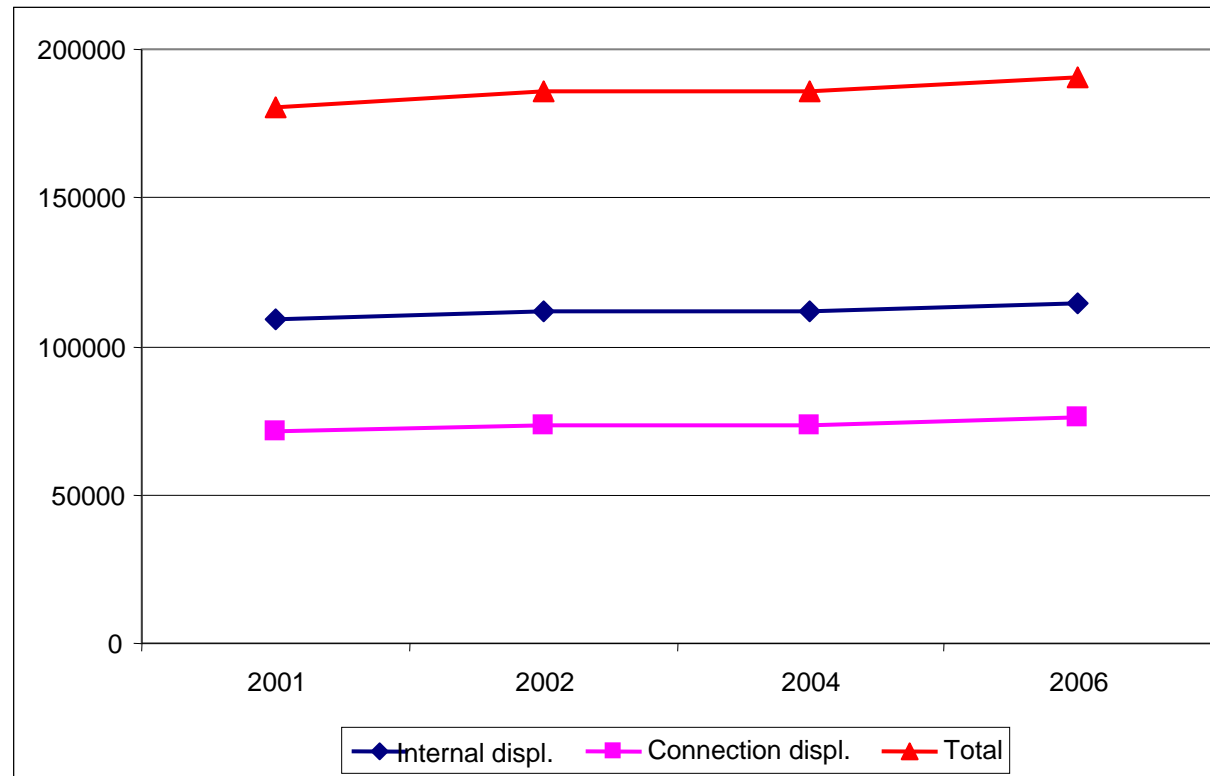


Source: EM-UA-2006, EMI-2007

Current mobility

- Evolution in displacements of the university community

Evolution in displacements of the university community. 2001-2006



Source: GEMOTT 2001, 2002, 2004. IERMB 2006, 2007

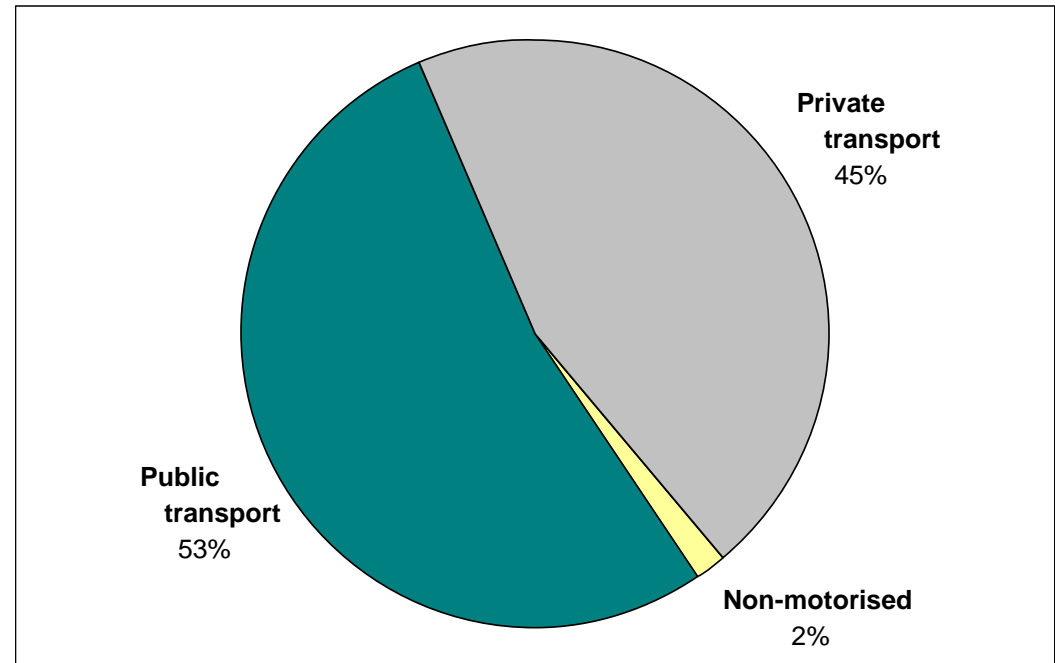
Current mobility

- Kinds of transports used

Connection displacements: approx. 105,000 displ./day

Kinds of transports used in all access displacement to the Bellaterra campus

TOTAL DISPLACEMENTS 220,000	DISPLACEMENTS UNIVERSITY COMMUNITY 190,000	Connection 75,000
		Internal 114,000
	DISPLACEMENTS NON-UNIVERSITY COMMUNITY ?	Connection 30,000
		Internal ?



Source: In-house based on the EMQ 2006 (ATM, Generalitat de Catalunya and IERMB, 2006).

Current mobility

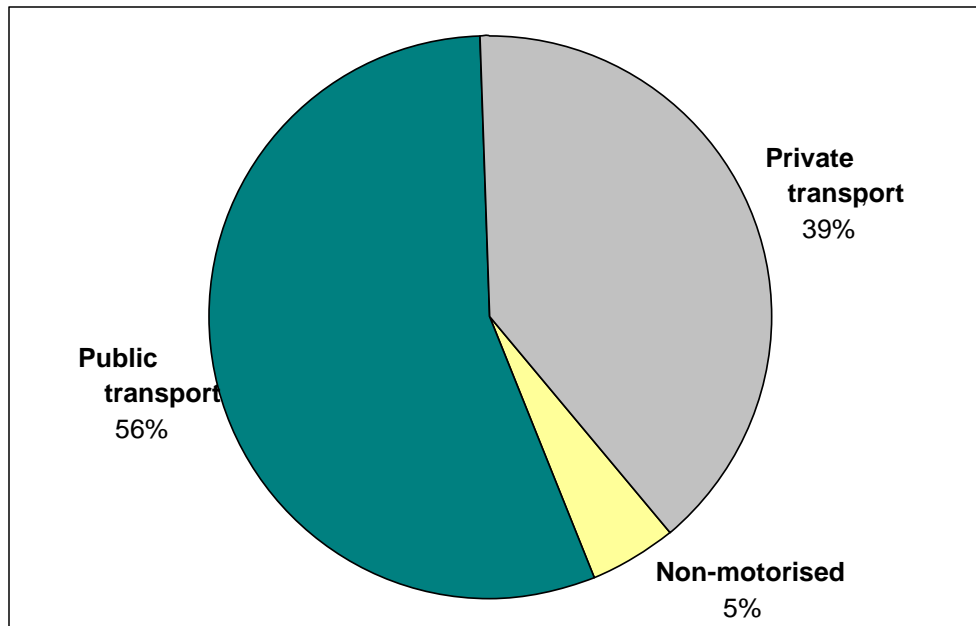
■ Kinds of transports used

Connection displacements. University community:

75,800 displ./day

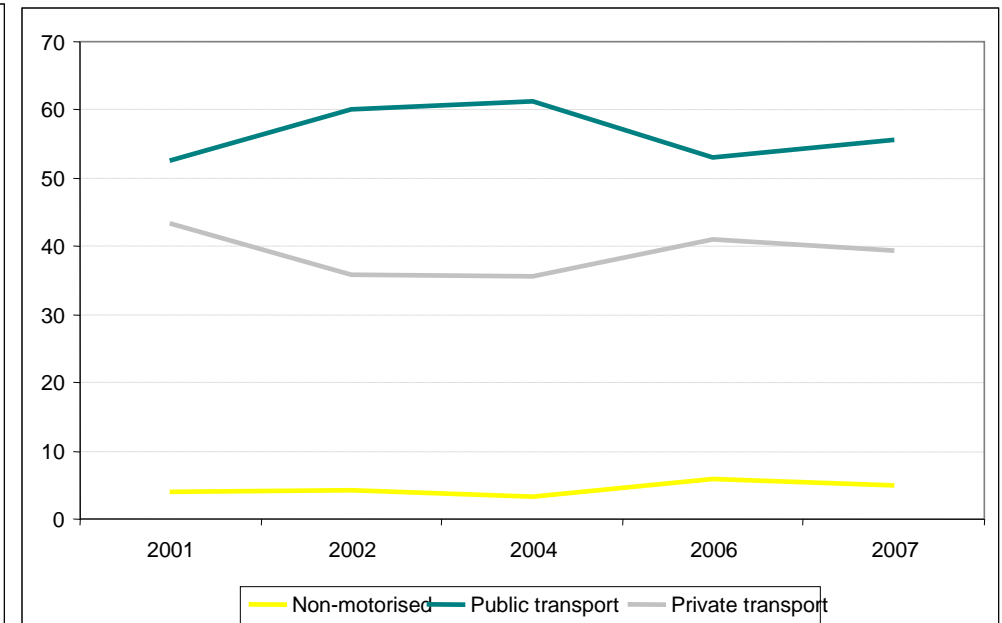
DESPLAÇAMENTS TOTALS 220.000	DESPLAÇAMENTS COMUNITAT UNIVERSITÀRIA 190.000	De connexió 75.000
	DESPLAÇAMENTS COMUNITAT NO UNIVERSITÀRIA ?	Interns 114.000
		De connexió 30.000
		Interns ?

Kinds of transports used in access displacements by the university community. 2007.



Source: In-house based on GEMOTT 2001, 2002, 2004. IERMB 2006, 2007.

Evolution in the kinds of transports used in access displacements by the university community. 2001-2007



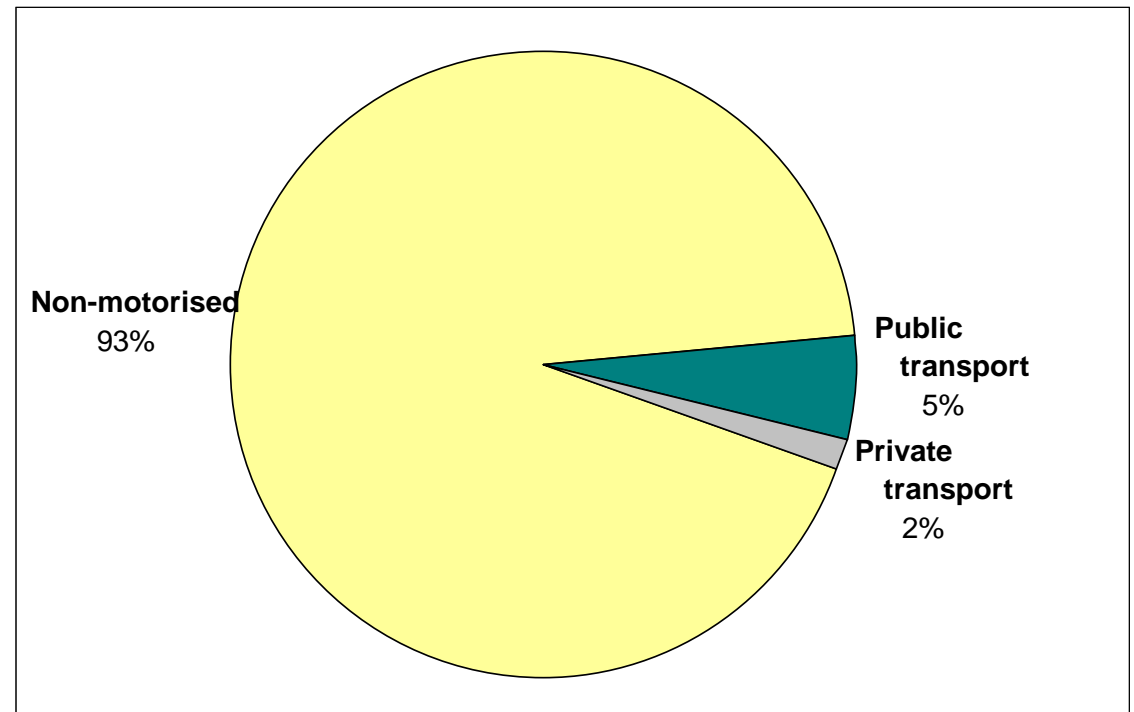
Current mobility

- Kinds of transports used

Internal displacements. University community: 114,800 displ./day

TOTAL DISPLACEMENTS 220,000	DISPLACEMENTS UNIVERSITY COMMUNITY 190,000	Connection 75,000
	DISPLACEMENTS NON-UNIVERSITY COMMUNITY ?	Internal 114,000
		Connection 30,000
		Internal ?

Kinds of transports used in internal displacements by the university community

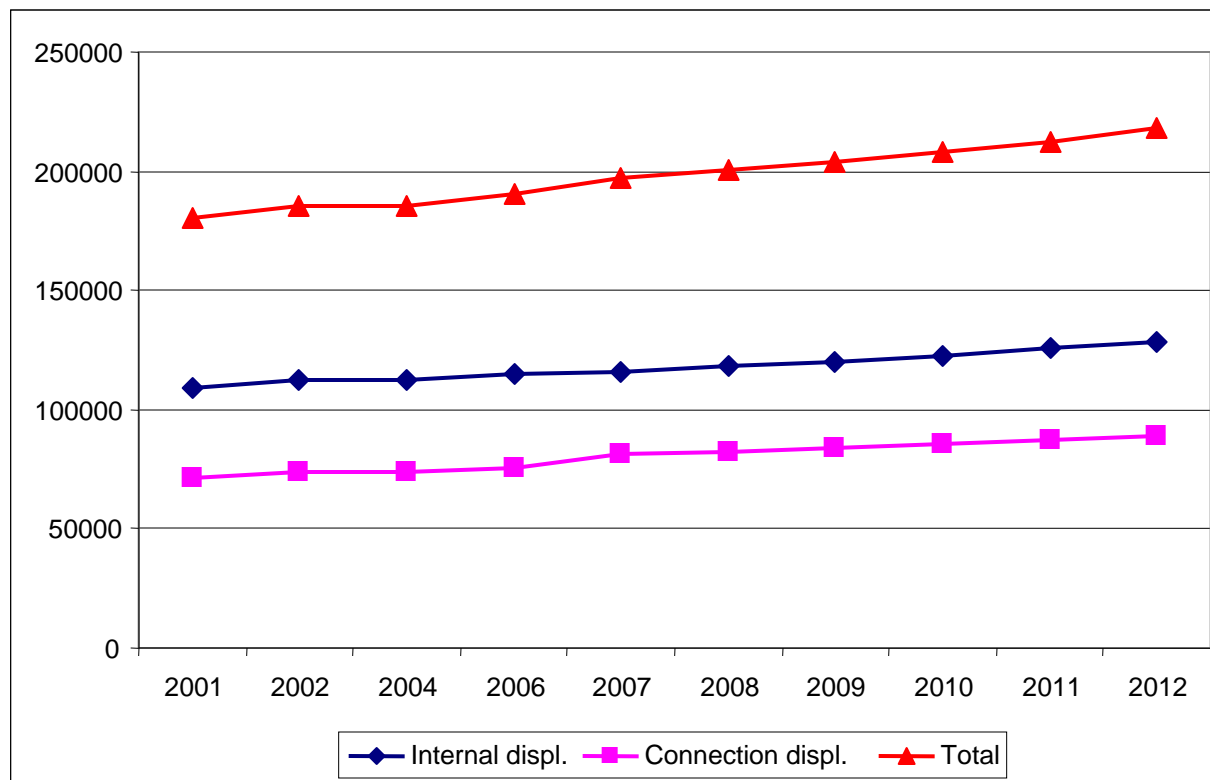


Source: In-house based on EMI-UAB-2007.

Tendential future mobility

■ Evolution in displacements by the university community

Evolution in total displacements by the university community. Tendential scenario for 2012.

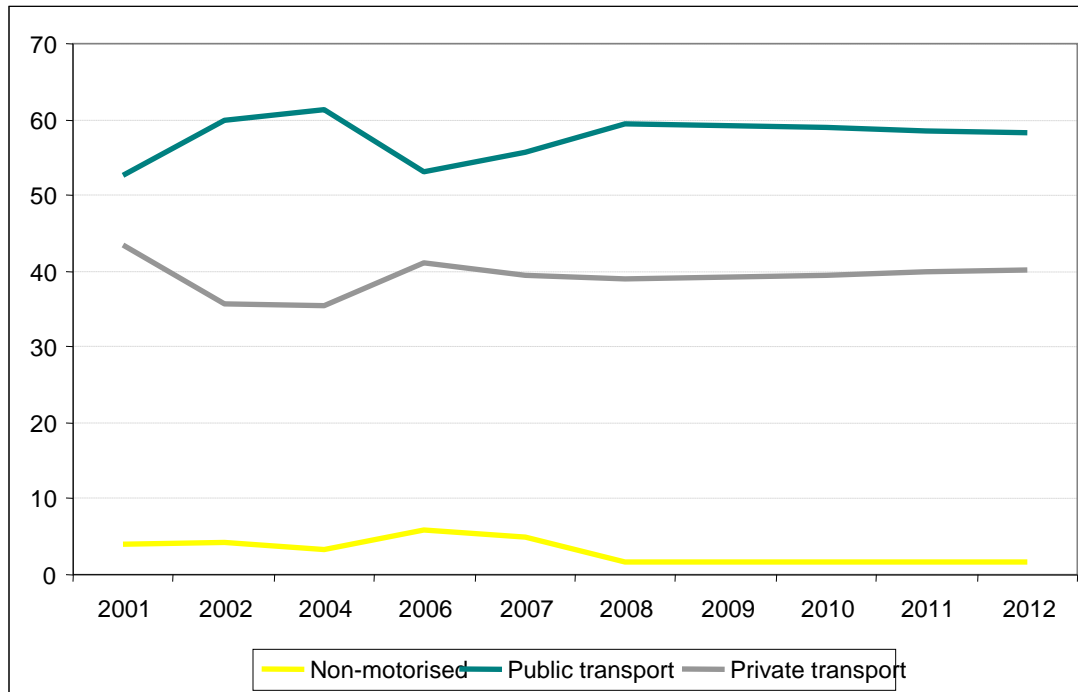


Source: In-house.

Tendential future mobility

- Evolution in the kinds of transports used for displacements by the university community

Evolution in the kinds of transports used in connection displacements by the university community. Tendential scenario until 2012.



Scenario 2012

Connection displacements

On foot: 2% (3% less - -2,000 displ.)

Public tr.: 58% (2% more – 9,275 displ.)

Private veh.: 40% (1% more - 6,180 displ.)

Internal displacements

Steady

- Evolution in displacements by the non-university community

Scenario 2012

Bellaterra campus

Directional centre

Connection displacements

30,000 displ. now → 32,700 displ. 2012

Connection displacements

2012: 118,000 displacements generated

On foot: 4.1% (0.1% less)

Public tr.: 50.7% (1% less)

Private veh.: 45.1% (1%

more)

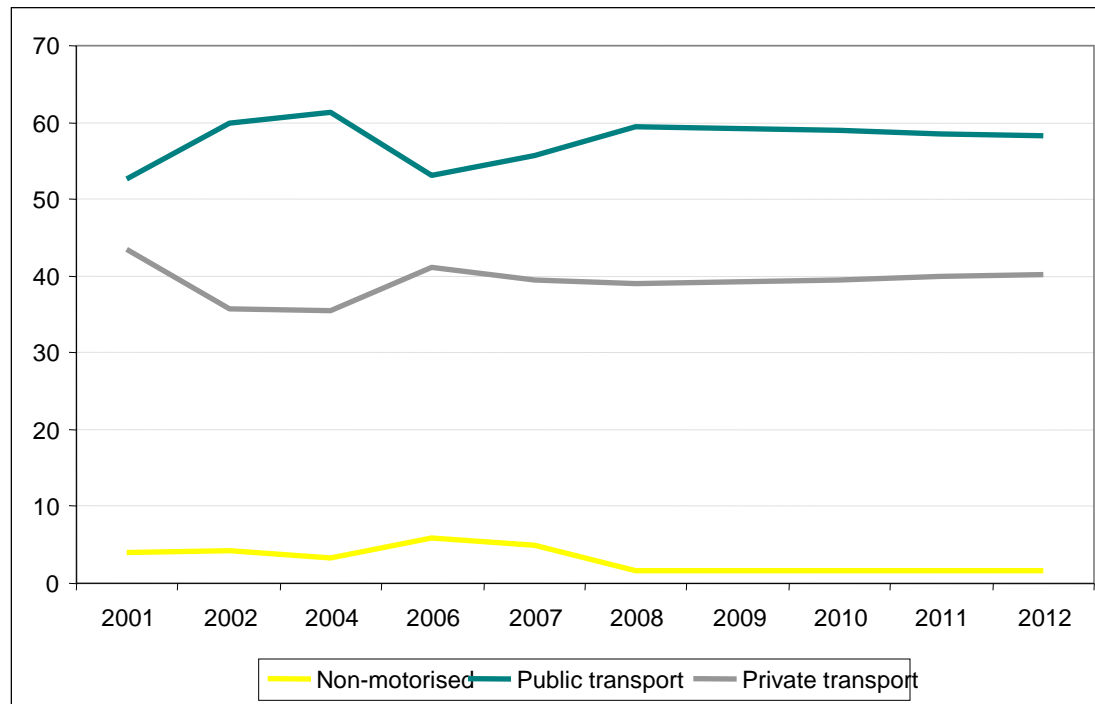
Internal displacements

?

Target future mobility

■ Evolution in displacements by the university community

Evolution in the kinds of transports used in connection displacements by the university community. Tendential and target scenarios until 2012.



Scenario 2012

Connection displacements

Non-motorised: 5% (steady 2,700 displ.)

Public tr.: 61% (5% more - 2,670 displ.)

Private veh.: 34% (5% less - -5,300 displ.)

Internal displacements

Steady

— Tendential

..... Target